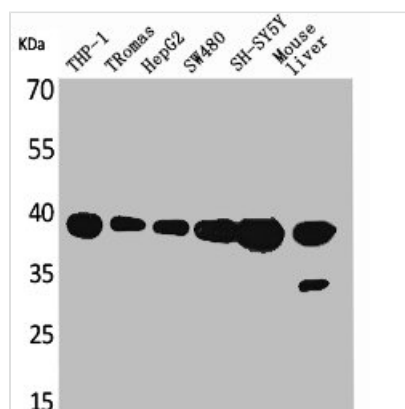




IL10 Antibody

Product Code	CSB-PA004870
Storage	Upon receipt, store at -20°C or -80°C. Avoid repeated freeze.
Uniprot No.	P22301
Immunogen	Synthesized peptide derived from the Internal region of Human IL-10.
Raised In	Rabbit
Species Reactivity	Human
Tested Applications	WB, ELISA; WB:1:500-1:2000, ELISA:1:20000
Form	Liquid
Conjugate	Non-conjugated
Storage Buffer	Liquid in PBS containing 50% glycerol, 0.5% BSA and 0.02% sodium azide.
Purification Method	The antibody was affinity-purified from rabbit antiserum by affinity-chromatography using epitope-specific immunogen.
Isotype	IgG
Product Type	Polyclonal Antibody
Immunogen Species	Homo sapiens (Human)
Gene Names	IL10

Image



Western Blot analysis of THP-1 Romas HepG2 SW480 SHSY5Y Mouse liver cells using IL-10 Polyclonal Antibody