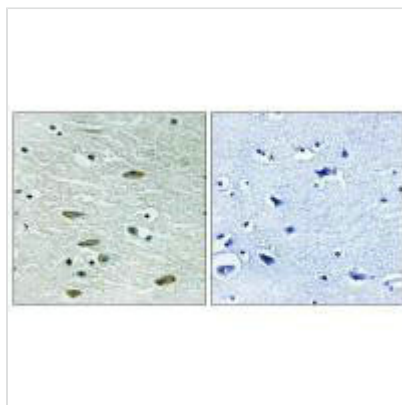




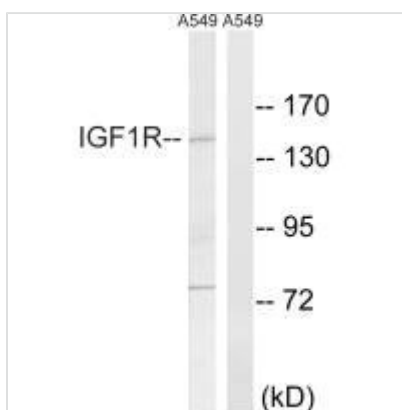
# IGF1R (Ab-1346) Antibody

<b>Product Code</b>	CSB-PA942675
<b>Storage</b>	Upon receipt, store at -20°C or -80°C. Avoid repeated freeze.
<b>Uniprot No.</b>	P08069
<b>Immunogen</b>	Synthesized non-phosphopeptide derived from Human IGF1R around the phosphorylation site of tyrosine 1346 (Q-P-Y(p)-A-H).
<b>Raised In</b>	Rabbit
<b>Species Reactivity</b>	Human, Mouse
<b>Tested Applications</b>	ELISA, WB, IHC; WB: 1:500-1:3000, IHC: 1:50-1:100
<b>Form</b>	Liquid
<b>Purification Method</b>	The antibody was affinity-purified from rabbit antiserum by affinity-chromatography using epitope-specific immunogen.
<b>Clonality</b>	Polyclonal
<b>Product Type</b>	Polyclonal Antibody
<b>Immunogen Species</b>	Homo sapiens (Human)
<b>Gene Names</b>	IGF1R

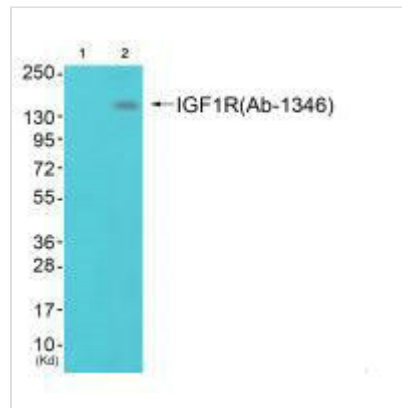
## Image



Immunohistochemistry analysis of paraffin-embedded human brain tissue using IGF1R (Ab-1346) antibody.



Western blot analysis of extracts from A549 cells, using IGF1R (Ab-1346) antibody.



Western blot analysis of extracts from 293 cells (Lane 2), using IGF1R (Ab-1346) antibody. The lane on the left is treated with synthesized peptide.

**Usage**

For Research Use Only. Not for use in diagnostic or therapeutic procedures.