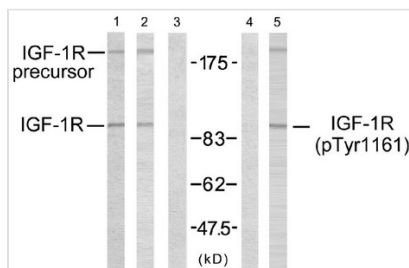




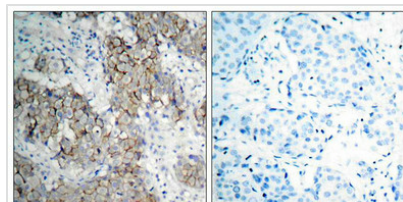
Phospho-IGF1R (Tyr1161) Antibody

Product Code	CSB-PA120059
Storage	Upon receipt, store at -20°C or -80°C. Avoid repeated freeze.
Uniprot No.	P08069
Immunogen	Peptide sequence around phosphorylation site of tyrosine 1161(D-I-Y(p)-E-T)derived from Human IGF-1R.
Raised In	Rabbit
Species Reactivity	Human,Mouse,Rat
Tested Applications	ELISA,WB,IHC,IF;WB:1:500-1:1000,IHC:1:50-1:100,IF:1:100-1:200
Form	Liquid
Purification Method	Antibodies were produced by immunizing rabbits with synthetic phosphopeptide and KLH conjugates. Antibodies were purified by affinity-chromatography using epitope-specific phosphopeptide. Non-phospho specific antibodies were removed by chromatography
Clonality	Polyclonal
Product Type	Polyclonal Antibody
Immunogen Species	Homo sapiens (Human)
Gene Names	IGF1R

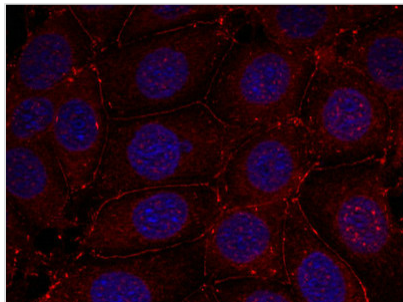
Image



Western blot analysis using IGF-1R (Ab-1161) antibody (Line 1, 2 and 3) and IGF-1R (phospho-Tyr1161) antibody (Line 4 and 5).



Immunohistochemical analysis of paraffin-embedded human breast carcinoma tissue using IGF-1R (phospho-Tyr1161) antibody.



Immunofluorescence staining of methanol-fixed MCF7 cells using IGF-1R (phospho-Tyr1161) antibody.

Usage

For Research Use Only. Not for use in diagnostic or therapeutic procedures.