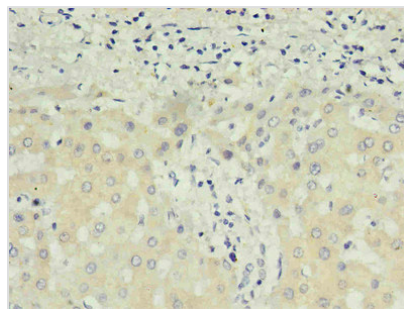




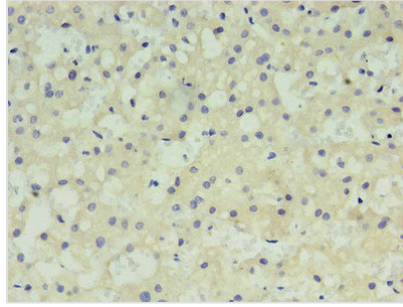
# AFP Monoclonal Antibody

<b>Product Code</b>	CSB-MA027711E0m
<b>Storage</b>	Upon receipt, store at -20°C or -80°C. Avoid repeated freeze.
<b>Uniprot No.</b>	P02771
<b>Immunogen</b>	AFP
<b>Raised In</b>	mouse
<b>Species Reactivity</b>	Human
<b>Tested Applications</b>	ELISA,IHC;Recommended dilution:IHC:1:50-1:500
<b>Relevance</b>	Alpha-fetoprotein (AFP, $\alpha$ -fetoprotein; also sometimes called alpha-1-fetoprotein, alpha-fetoglobulin, or alpha fetal protein) is a protein that in humans is encoded by the AFP gene. The AFP gene is located on the q arm of chromosome 4 (4q25). AFP is a major plasma protein produced by the yolk sac and the liver during fetal development. It is thought to be the fetal form of serum albumin. AFP binds to copper, nickel, fatty acids and bilirubin and is found in monomeric, dimeric and trimeric forms.
<b>Form</b>	liquid
<b>Conjugate</b>	Non-conjugated
<b>Storage Buffer</b>	Preservative: 0.03% Proclin 300 Constituents: 0.01M PBS, PH 7.4
<b>Purification Method</b>	>95%,Protein G purified
<b>Isotype</b>	IgG1
<b>Clonality</b>	monoclonal
<b>Product Type</b>	Monoclonal Antibody
<b>Immunogen Species</b>	Homo sapiens (Human)
<b>Gene Names</b>	AFP
<b>PubMed ID</b>	4G2D2

## Image



Immunohistochemistry of paraffin-embedded human liver using CSB-MA027711E0m in 30 $\mu$ g/ml dilute concentrations.



Immunohistochemistry of paraffin-embedded human liver cancer using CSB-MA027711E0m in 30 $\mu$ g/ml dilute concentrations.